



THE LAKES AT  
**JAMESTOWN**



L'Poche

**Features:**

Living Area: 2193 SF

Total Area: 2899 SF

Bedrooms: 4

Baths: 3

- Private Office
- Work Island in Kitchen
- Walk-in Pantry
- Knotty Cypress Cabinets in Kitchen
- Open Living Areas
- Double Vanities in Two Baths
- Walk-in Closet & Oversized Whirlpool in Master Bath

*Another Premier Development By:*



**Carlos Alvarez**  
RE/MAX TOTAL

(225) 296-7811 direct

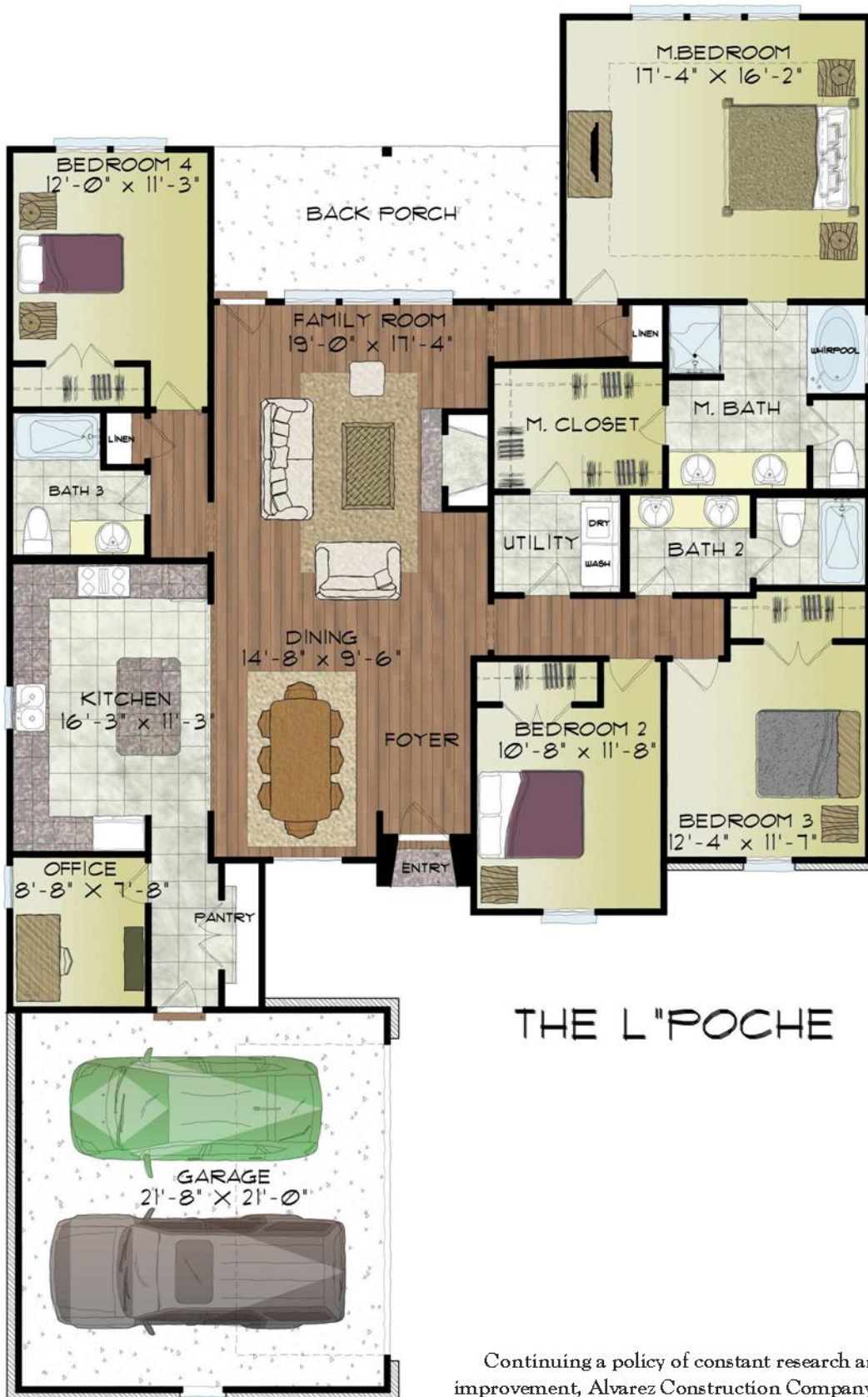
(225) 293-2800 office

[www.AlvarezRealEstate.com](http://www.AlvarezRealEstate.com)



[www.JamestownatOldPerkins.com](http://www.JamestownatOldPerkins.com)





## THE L'POCHE

Continuing a policy of constant research and improvement, Alvarez Construction Company, Inc. reserves the right of price, plan, or specification change without notice or prior obligation.

